



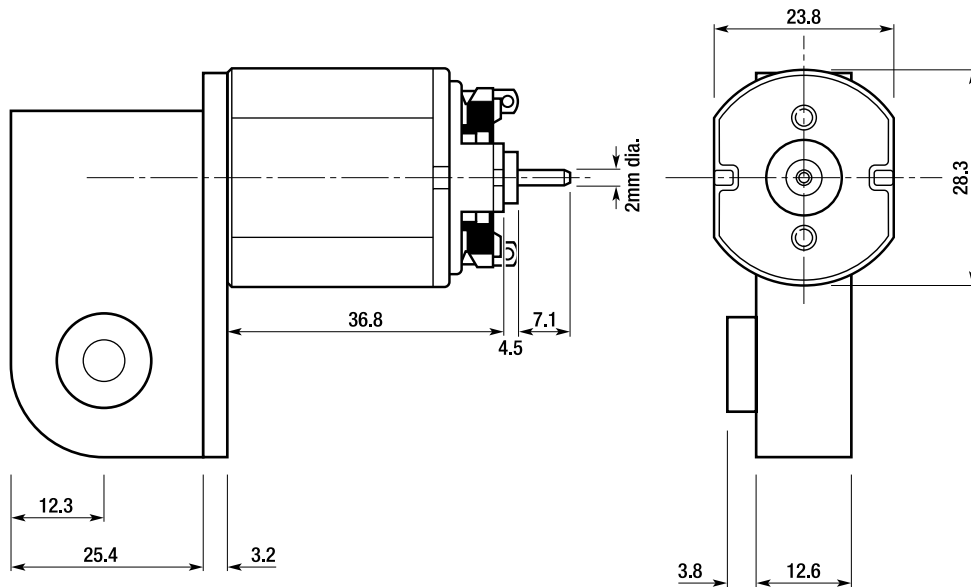
Wyvern Gearbox fitted with Buhler 1.16.037.069 Motor

Available Ratios: 18/1, 24/1, 36/1

Supplier: R.L.Moore Engineering

Motor Nominal Voltage 12V Stalled Current at 12V - 4.0A

For full motor details see Motor Data Sheets



Note: The voltage is at the motor terminals. It is recommended that the supply voltage be at least 2V higher to allow for feeder and pick-up drop.

Ratio	Performance	12V	16V
18/1	No Load Axle Speed (rpm)	583	
	Stalled Torque (g.cm)	2830	
	Speed Rating	437	
	Torque Rating	707	
	Use a higher ratio on 18V supply.		
24/1	No Load Axle Speed (rpm)	437	583
	Stalled Torque (g.cm)	3019	4025
	Speed Rating	328	437
	Torque Rating	754	1006
36/1	No Load Axle Speed (rpm)	292	388
	Stalled Torque (g.cm)	4528	6038
	Speed Rating	219	292
	Torque Rating	1132	1510